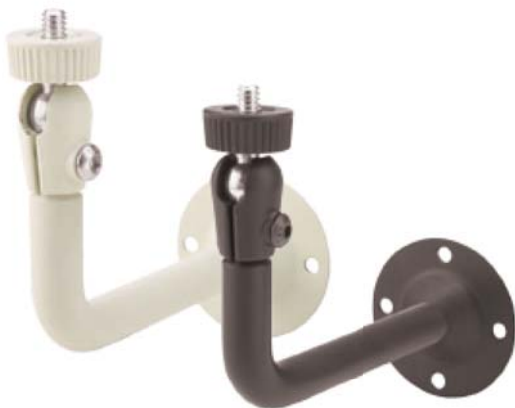


Angle Micro Mount Models PAN-846L...

Another great choice for the perfect camera installation!



Angle Micro Mount Black Model PAN-846L
Angle Micro Mount Cream Model PAN-846LW

- > 0.5" (12.7mm) diameter solid steel shaft
- > Length of mount from base to front of mount: 4.0" (102mm)
- > Length of mount from bottom of angle to top of mount: 3.375" (85.7mm)
- > 1/4-20 stud with lockring; adjustable at the camera (190° Tilt, 360° Turn & 360° Rotation)
- > Knob and tamper-resistant set-screw adjusting options included. Matching vinyl cover adds a finished look!
- > 2" (50.8mm) round base with four 0.188" (4.8mm) holes on 1.6" (40.6mm) bolt circle



Includes knob, set-screw with hex key, and vinyl base cover